

NMT cables

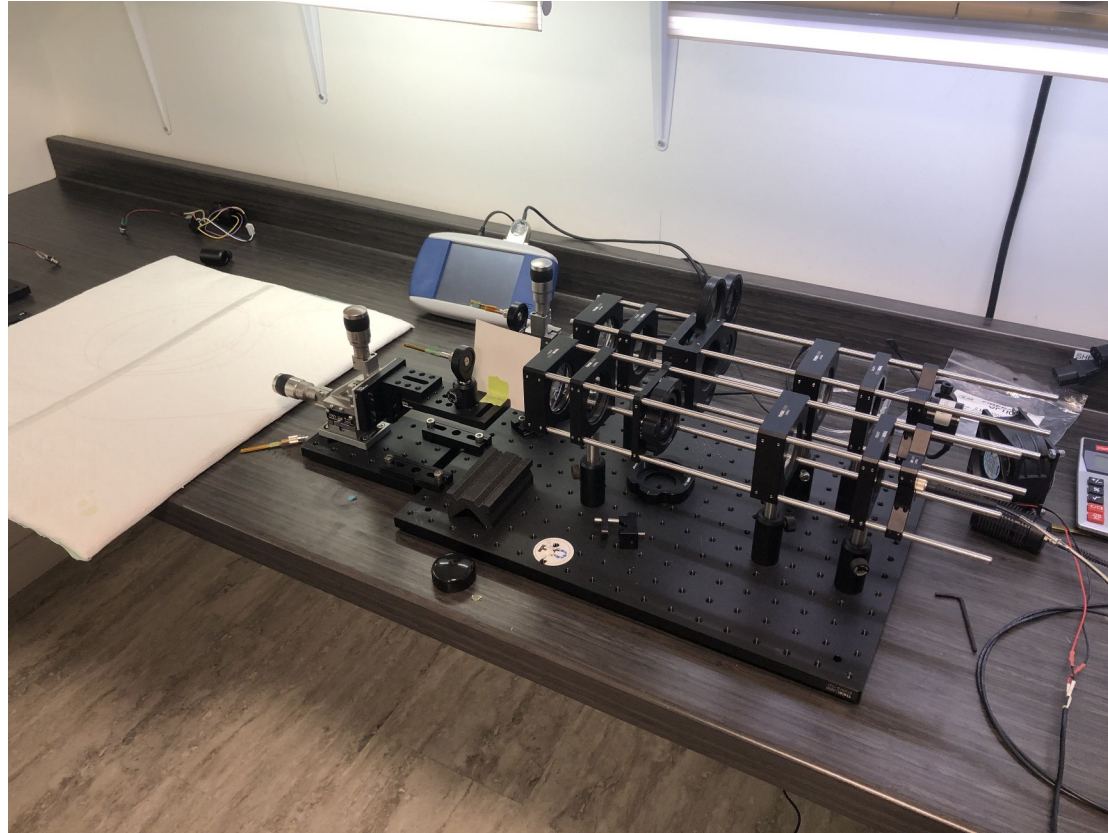
- Summary

Cable-86 (second cable) shows a consistent performance across all branches with data from the F6 throughput and the ring test. Overall performance is about 50% end to end.

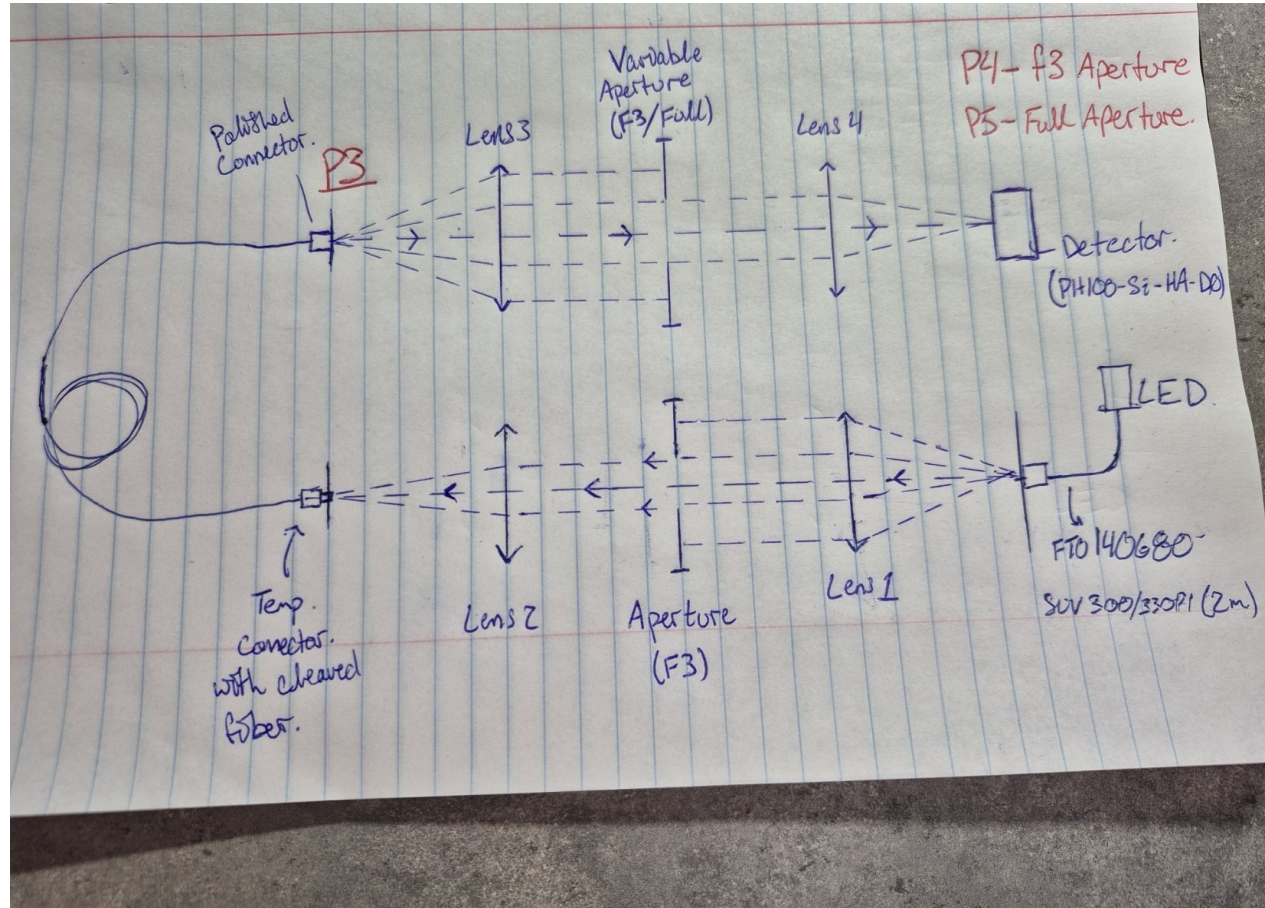
Cable-87 (first cable) shows strong variability across the branches and this variability is also reflected in the throughput and ring test.

Other tests were conducted by direct coupling (fused and with a connector) at F4 and F6 and those show high throughput with some variability on cable -87

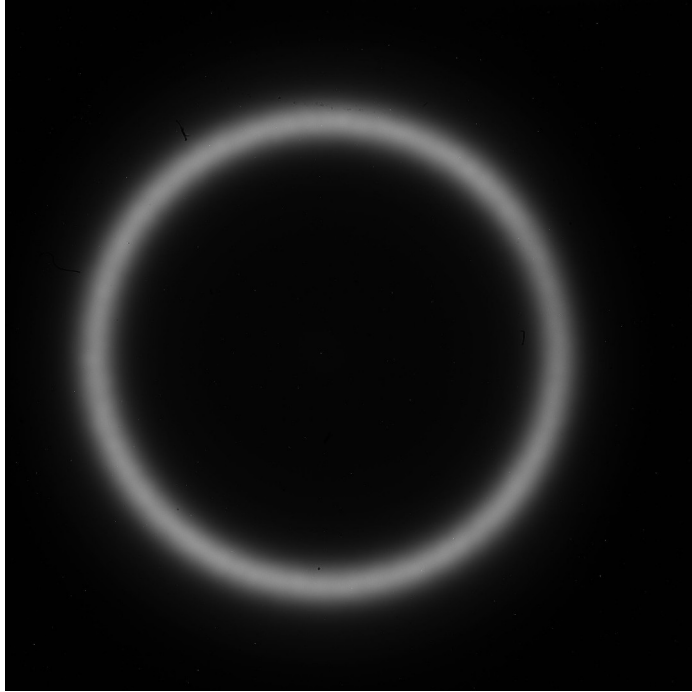
Throughput set-up



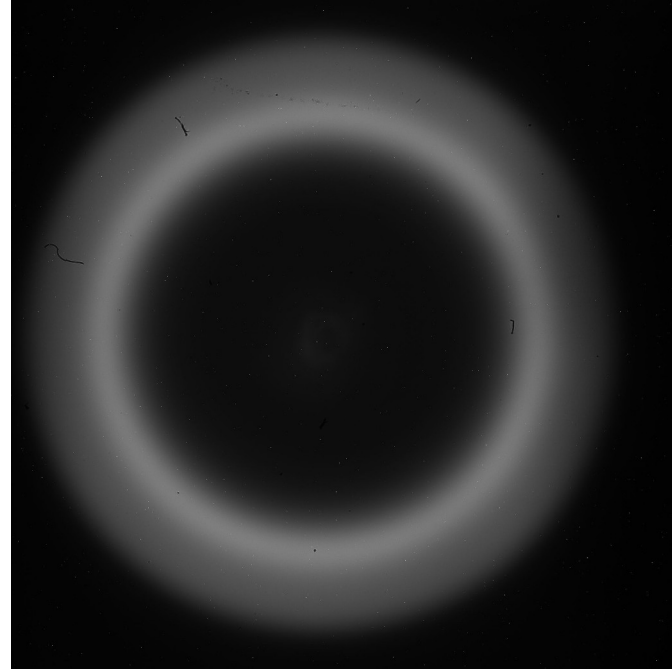
Throughput set-up schematics



Cleaved Fiber Ring Tests at F#3 Input Aperture

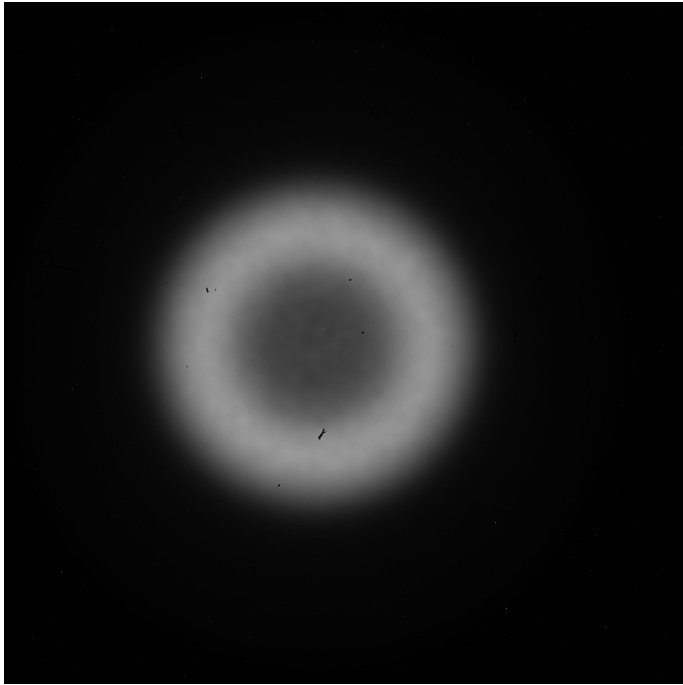


Single Splice (4m)
50/70 OCT to 50/125
F3 Aperture

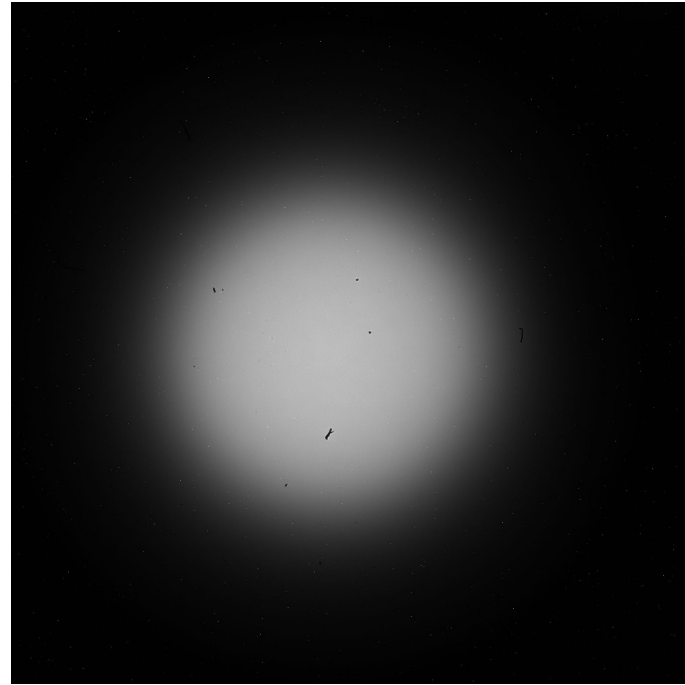


Double Splice (86m)
53/74 to 50/70 OCT
to 50/125
F3 Aperture

Cleaved Fiber Ring Tests at F#6 Input Aperture

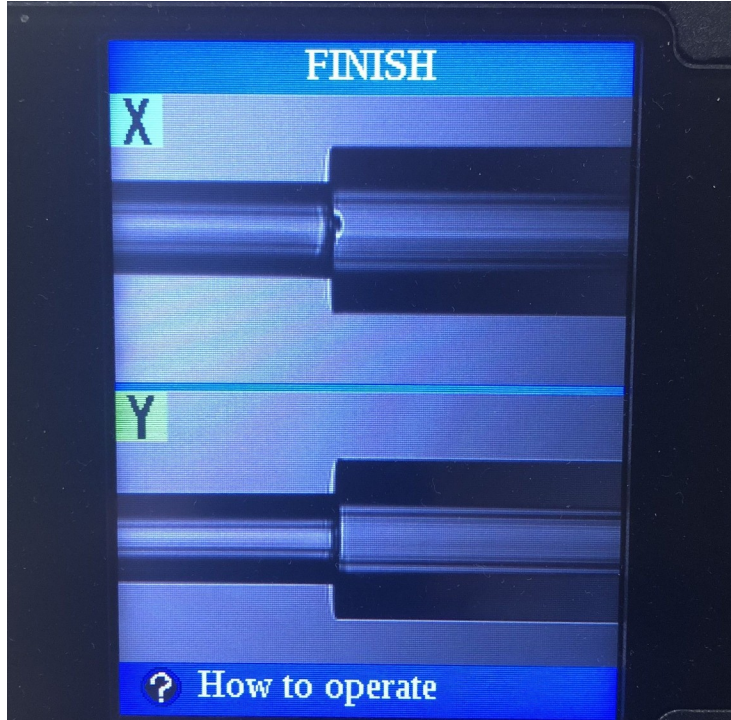


Single Splice (4m)
50/70 OCT to 50/125
F6 Aperture

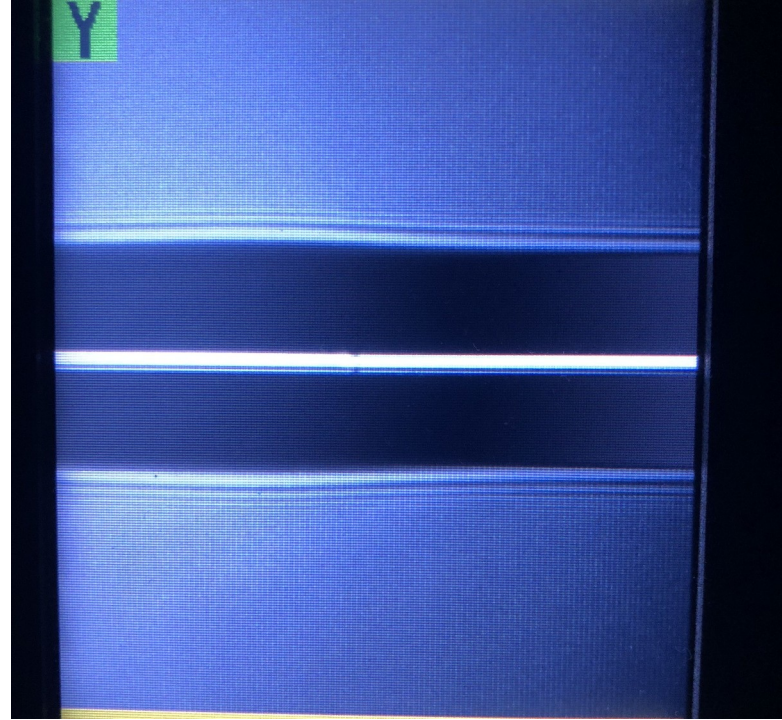


Double Splice (86m)
53/74 to 50/70 OCT
to 50/125
F6 Aperture

Fused fiber images

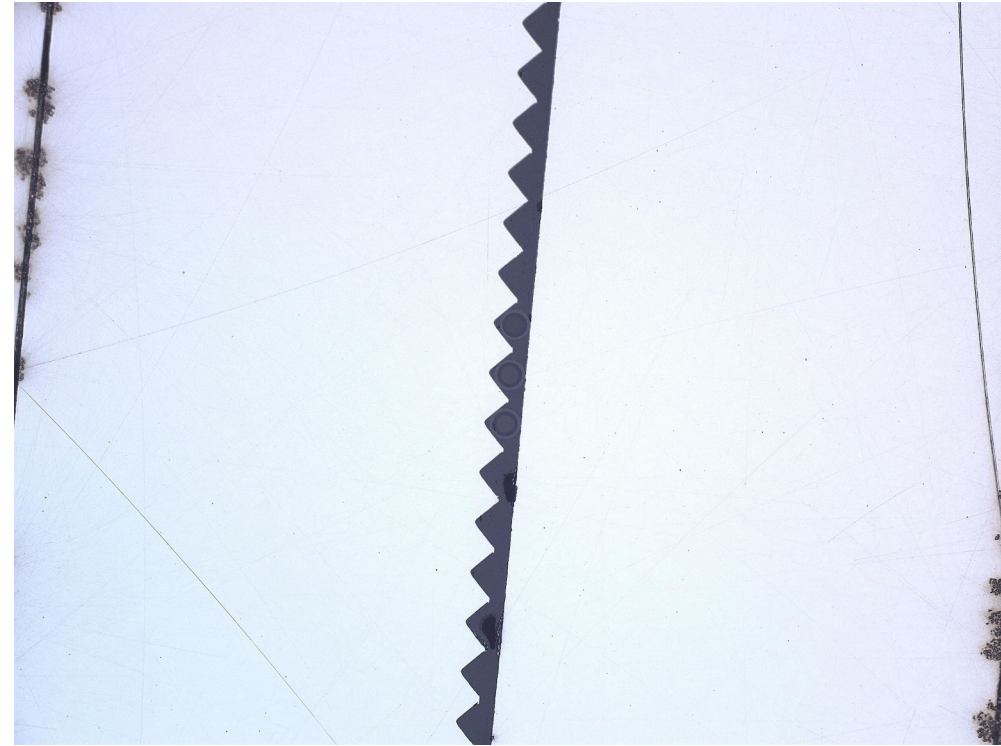
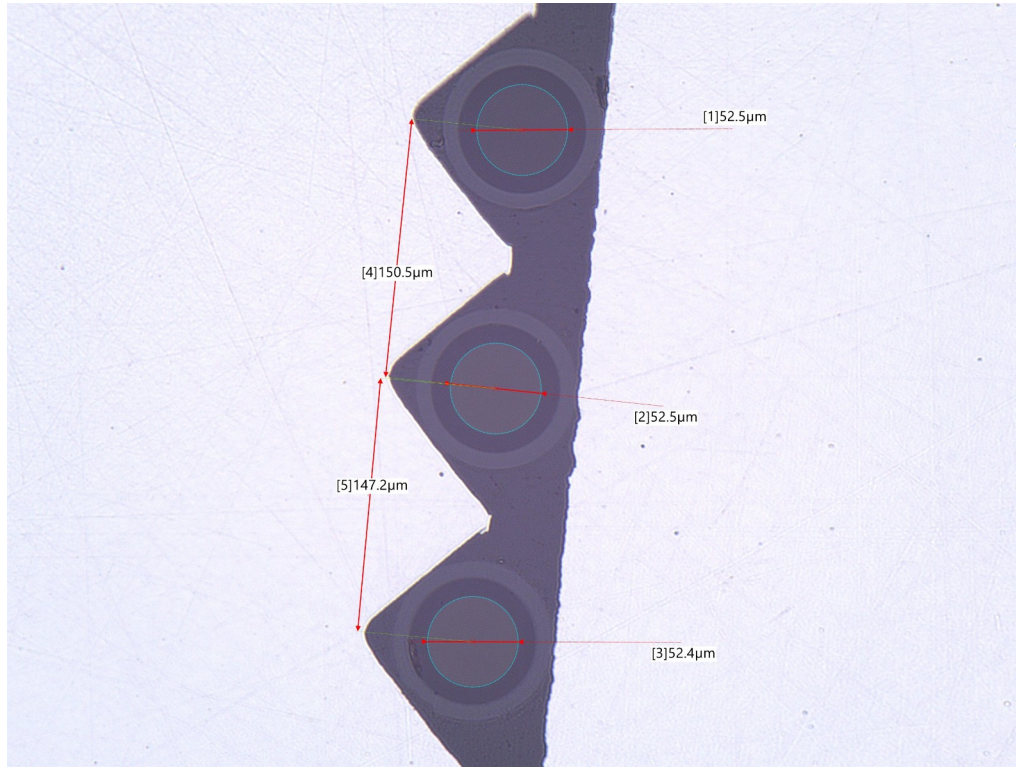


50/125um to 50/70um OCT



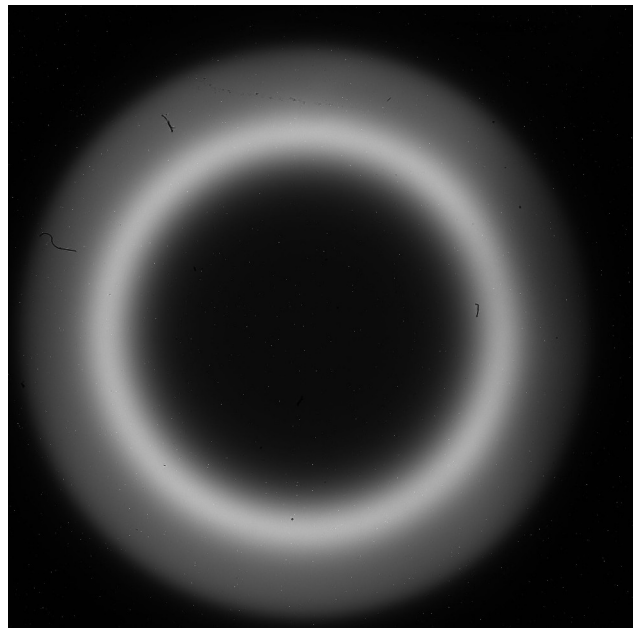
53/74um (main cable) to 50/70um OCT

Cable 241586 V-groove Images

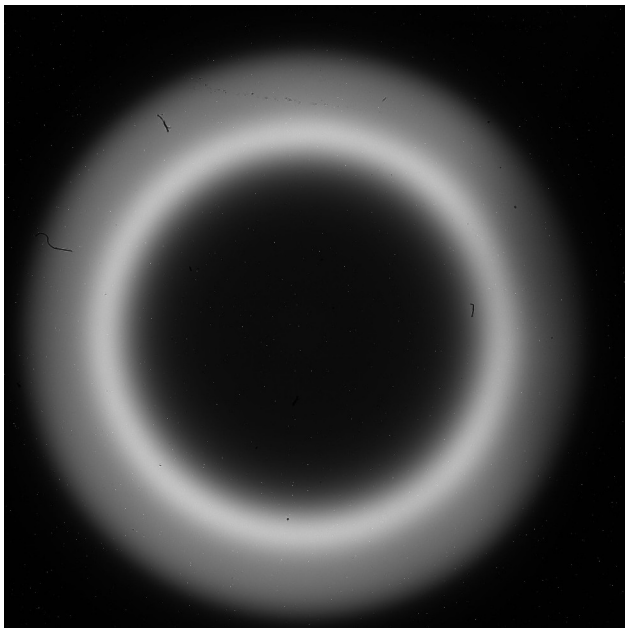


Note: Individual pictures of the connectors are not presented. They did not show any defects.

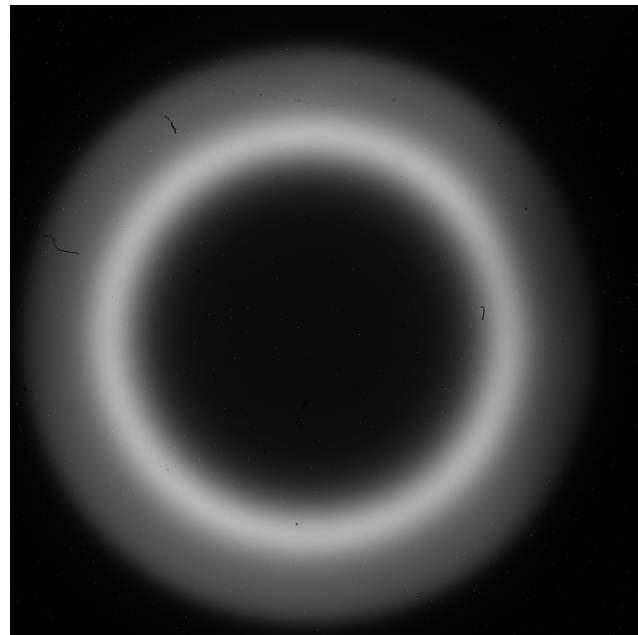
Cable 241586 Final Rings



Leg 1



Leg 2



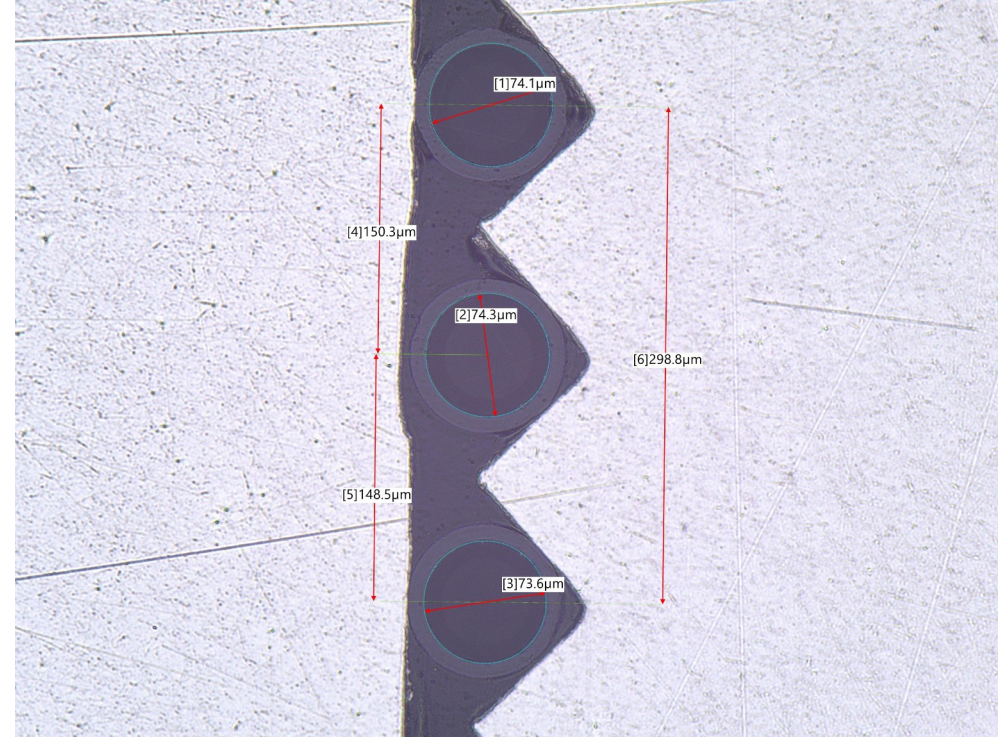
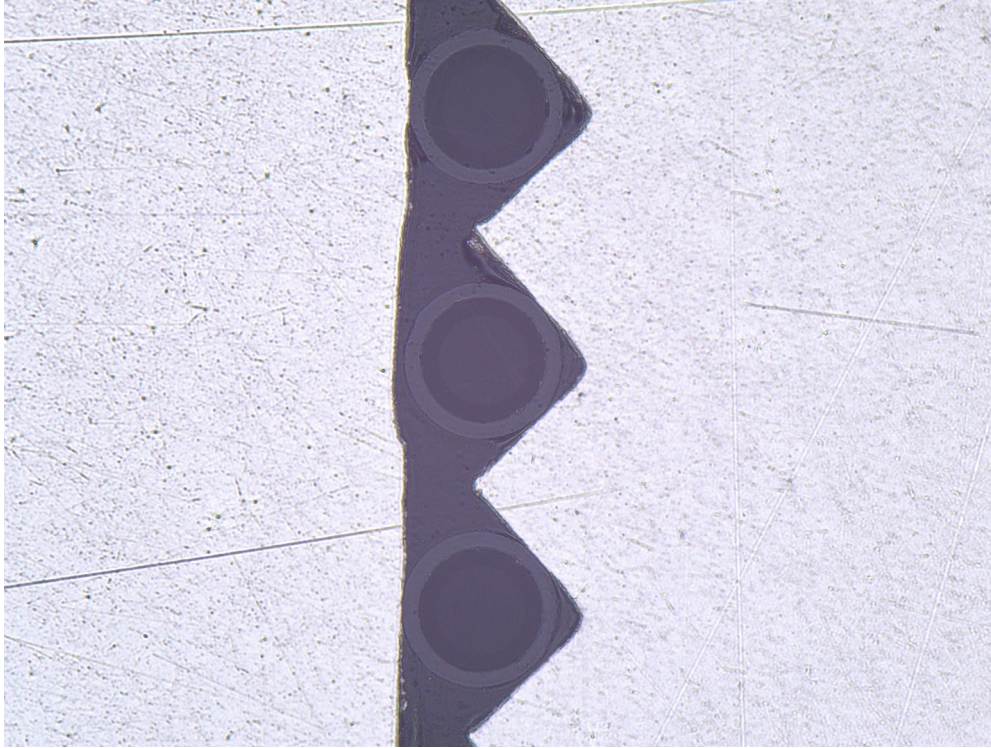
Leg 3

241586 Test Data

Fiber	F#3 Input FRD Throughput (630nm)	F#6 Input FRD Throughput (630nm)	*Transmission Single mode fiber injection @ 1310nm
3m Cleaved 53/74 Ref	96.6%	59.66%	
Leg 1	97.3%	52.5%	88.3%
Leg 2	97.6%	52.2%	89.9%
Leg 3	97.6%	51.62%	89.9%

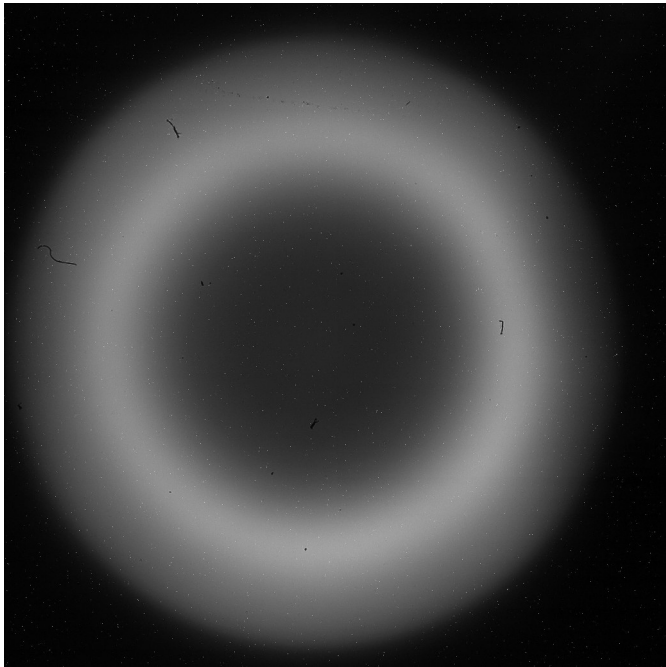
*The transmission test was done at F4 with an FC/PC connectorized single mode fiber

Cable 241587 V-groove Images

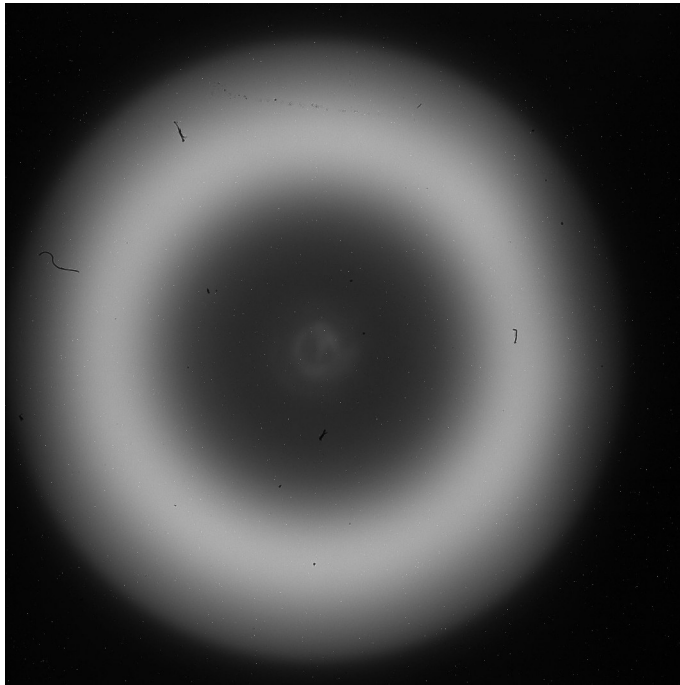


Note: Individual pictures of the connectors are not presented. They did not show any defects.

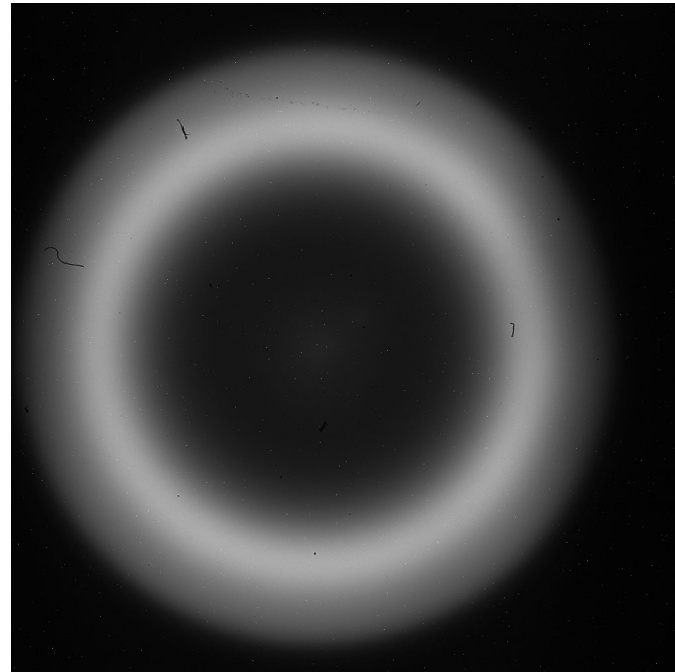
Cable 241587 Final Rings



Leg 1



Leg 2



Leg 3

241587 Test Data

Fiber	F#3 Input FRD Throughput (630nm)	F#6 Input FRD Throughput (630nm)	*Transmission Single mode fiber injection @ 1310nm
3m Cleaved 53/74 Ref	96.6%	59.7%	
Leg 1	91.7%	33.1%	85.3%
Leg 2	74.1%	23.4%	89.7%
Leg 3	95.3%	41.8%	86.3%

*The transmission test was done at F4 with an FC/PC connectorized single mode fiber