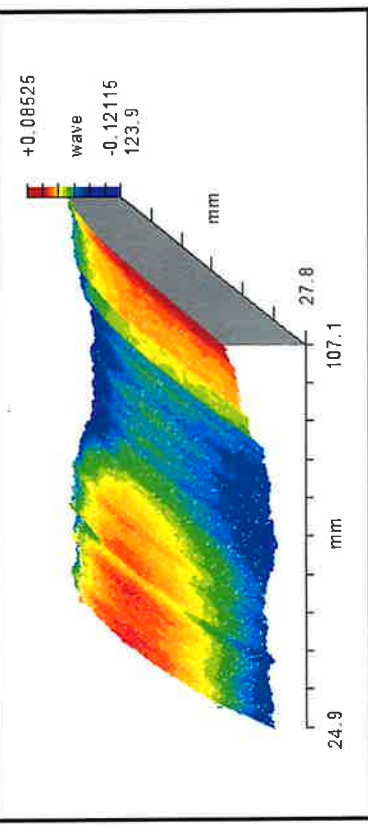
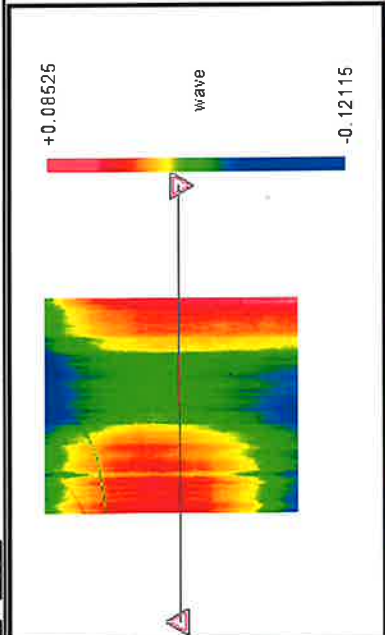


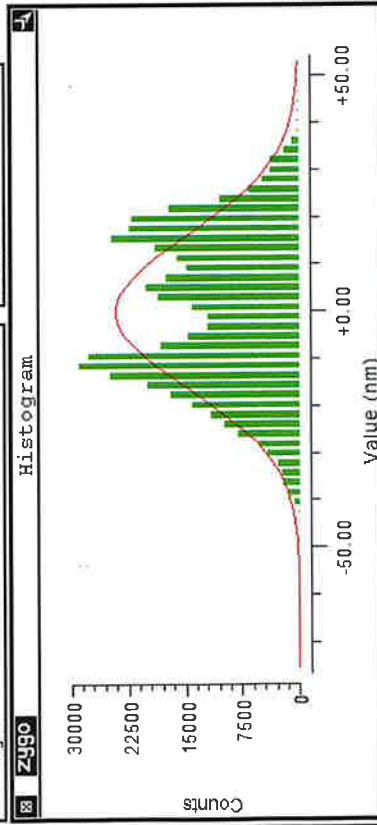
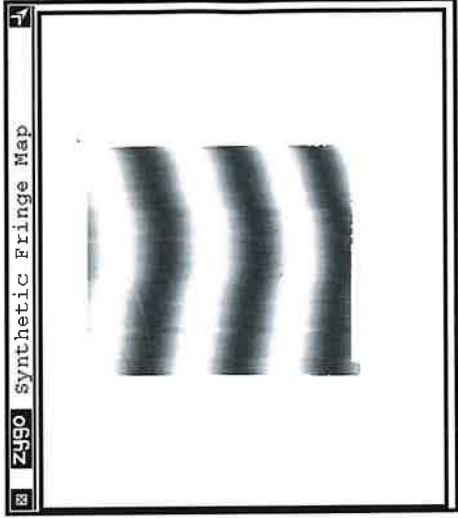
Zygo Surface/Wavefront Map Zygo Oblique Plot



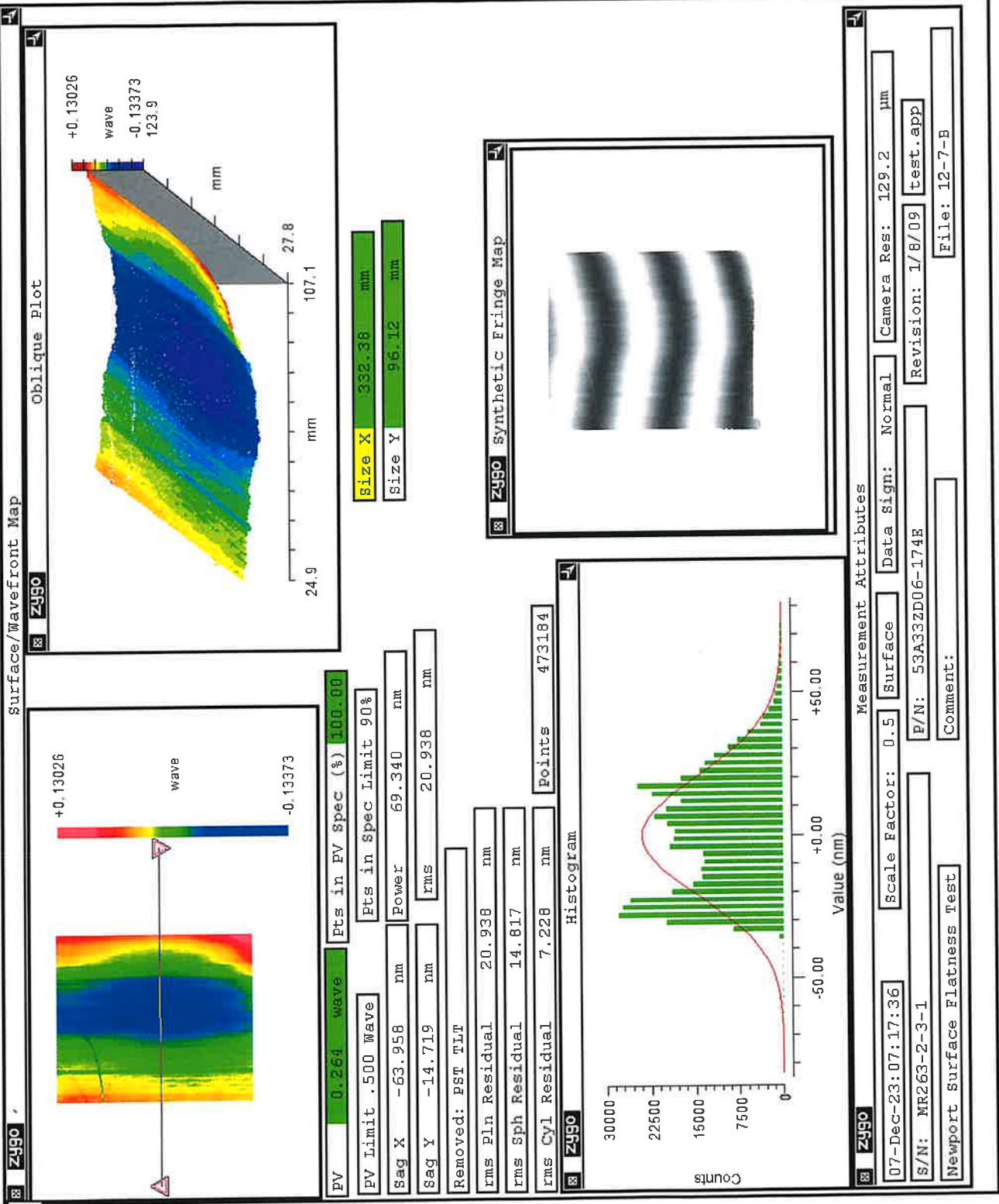
Size X 332.38 mm  
Size Y 96.12 mm



PV 0.206 wave Pts in PV spec (%) 100.00  
 FV Limit .500 Wave Pts in Spec Limit 90%  
 Sag X -68.859 nm Power 75.368 nm  
 Sag Y -16.481 nm rms 16.263 nm  
 Removed: PST TLT PWR  
 rms Pln Residual 22.870 nm  
 rms Sph Residual 16.263 nm  
 rms Cyl Residual 7.852 nm Points 473184



Zygo Measurement Attributes  
 07-Dec-23:07:16:01 Scale Factor: 0.5 Surface Data Sign: Normal Camera Res: 129.2 μm  
 S/N: MR263-2-3-1 P/N: 53A33ZD06-174E Revision: 1/8/09 test.app  
 Newport Surface Flatness Test Comment: File: 12-7-B



MR263-1, 31.6g/mm, 76deg, near order ghost trace@632.8nm, m=97, 8/7/13

